

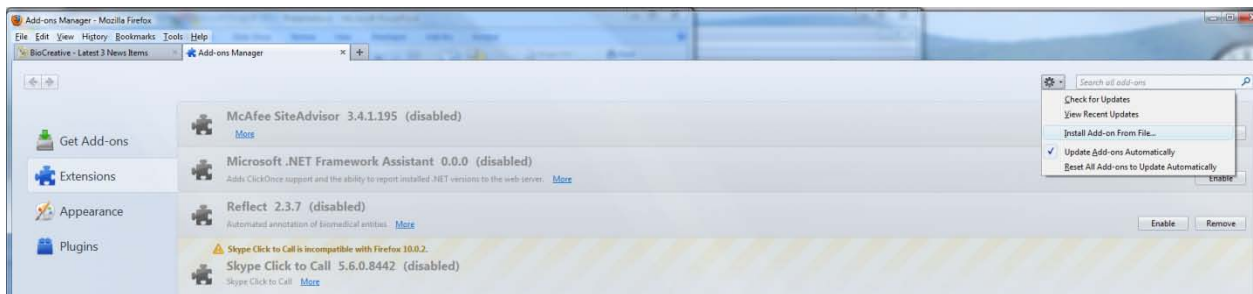
BioCreative workshop 2012- Track III

These are the instructions to install the curatorlogger add-on in Mozilla Firefox.

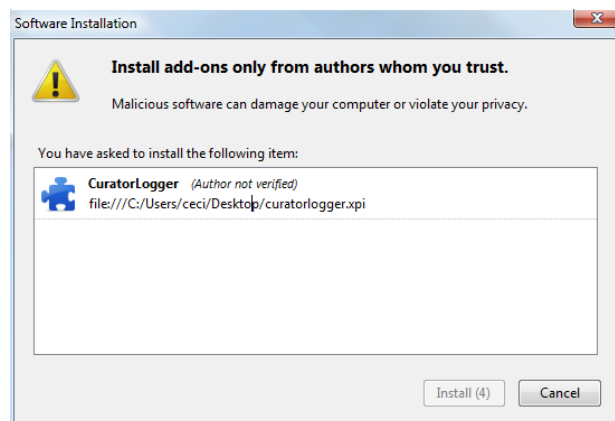
1-This add-on works on Firefox 4.0 or higher. To check the version you currently have go to Help>about Firefox.



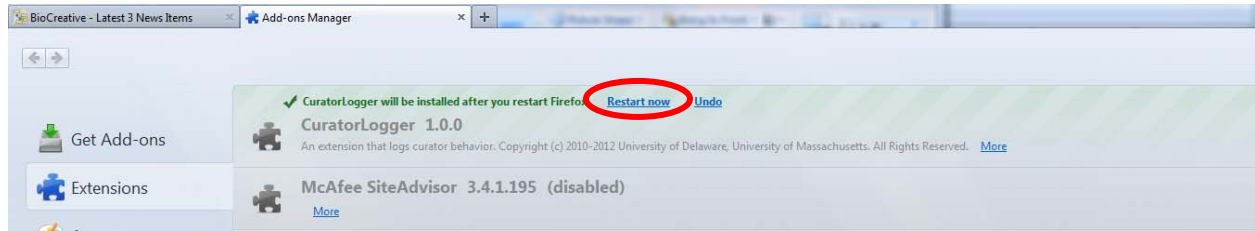
2-To include the add-on, go to Tools>add-on, and then select the gear icon on the upper right corner (shown in figure below). Select Add-on from file option from drop down menu and browse to find the curatorlogger.xpi file



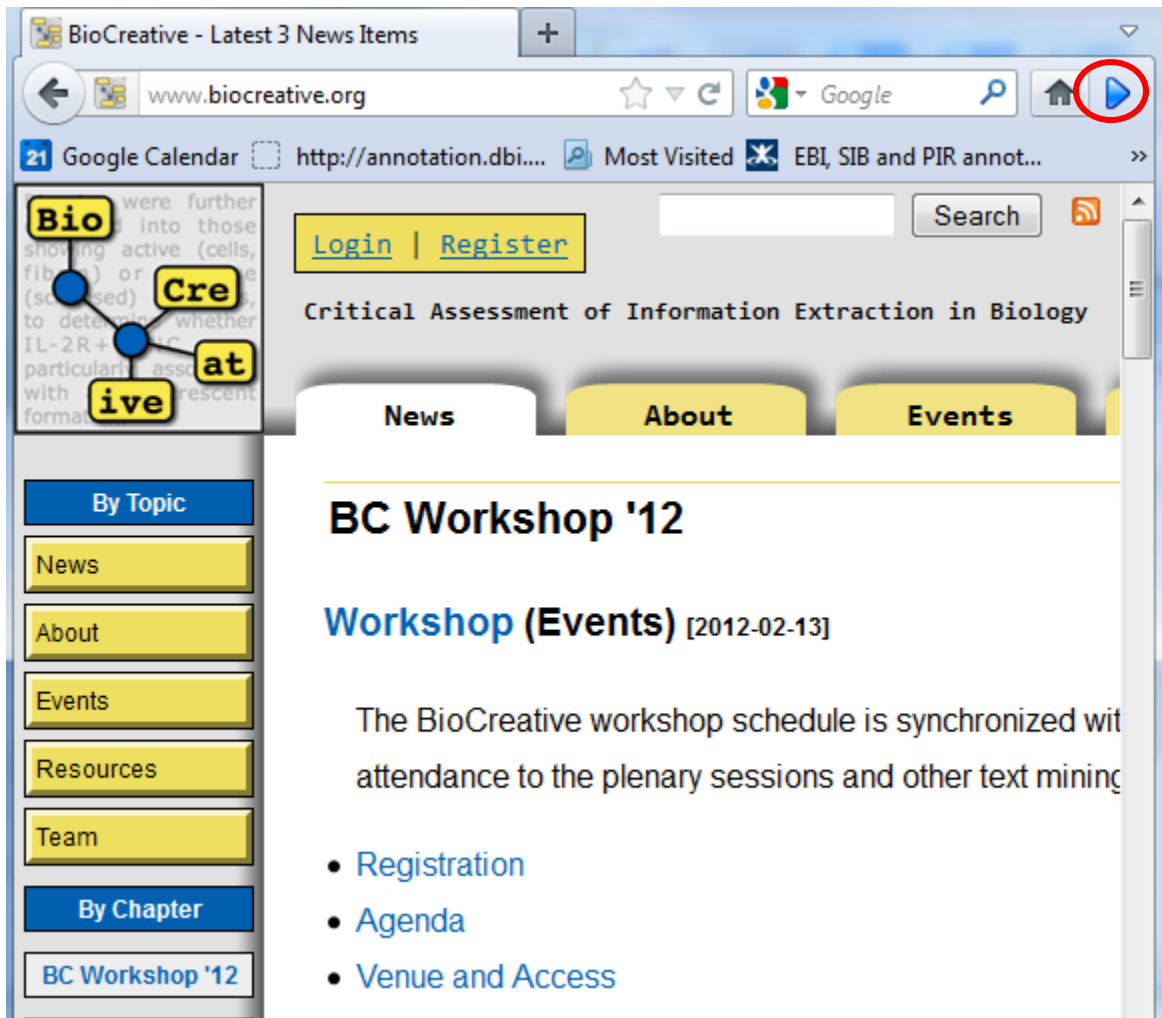
3-You may need to give permission to upload the file. Once uploaded Firefox will restart.



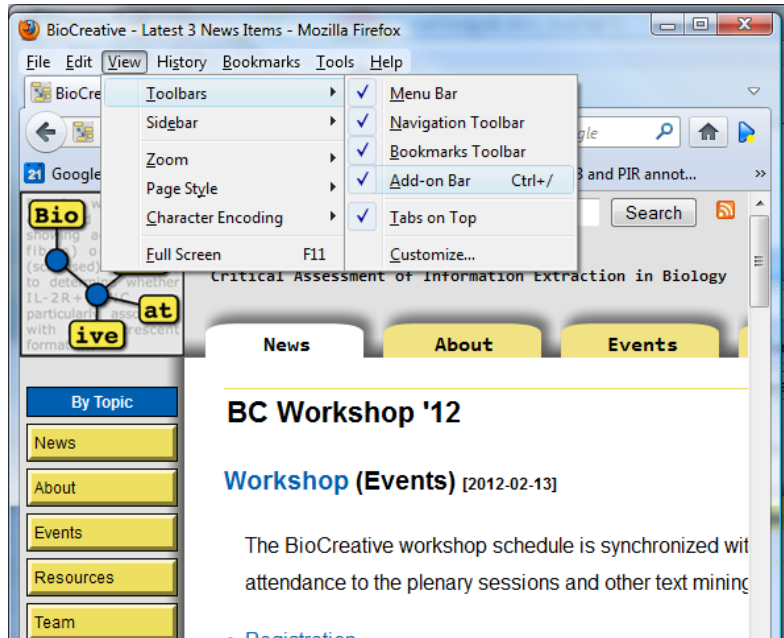
BioCreative workshop 2012- Track III



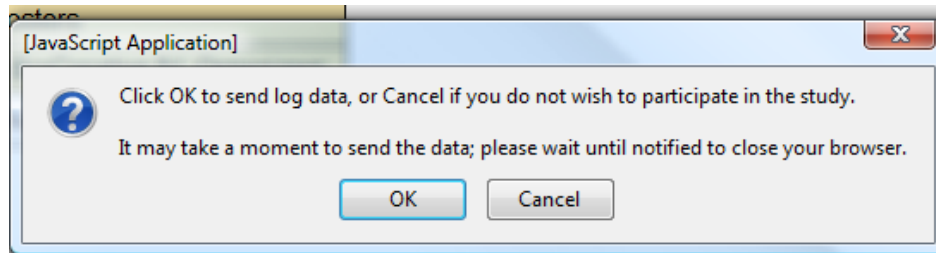
4-The logger shows as a play button on the right corner. If you don't see it check if the add-on toolbar is selected. For this go to View>Toolbars>add-on bar



BioCreative workshop 2012- Track III

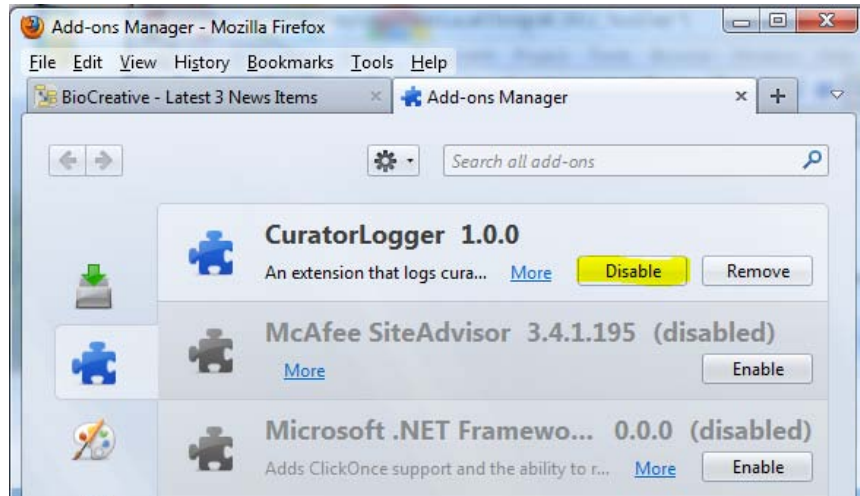


5-To use the logger, simply press play when you start the evaluation, and stop when you are done with the session, a message will pop up requesting permission to submit the data to the Biocreative. Press OK if you agree.



When you are done with the session, you can disable the logger by going to Tools>add-on>extensions. Next time you continue with annotation do not remove the previous log info.

BioCreative workshop 2012- Track III



6-When you are done with the evaluation we encourage you to remove this logger.

